

U.S. Data Review

- ISM Nonmanufacturing: above pre-virus level

Michael Moran

 Daiwa Capital Markets America
 212-612-6392
 michael.moran@us.daiwacm.com

ISM Nonmanufacturing Index

The ISM nonmanufacturing index rose 0.9 percentage point to 57.8 in September. The change was not large, but it was better than the expected decline of 0.7 percentage point. In addition, the pickup occurred from an elevated level and was enough to move the index above the pre-pandemic reading of 57.3 in February (although a bit shy of the 58.1 percent reading in July).

The new orders component led the advance in September with a jump of 4.7 percentage points. The measure was already at a solid level in August, and the change pushed it above 60 percent for the third time in the past four months, including a record level of 67.7 percent in July (chart, left). Strong order flows have led to a good pace of business activity, with this component increasing 0.6 percentage point. The change was small, but it occurred from an elevated level and left the index above 60 percent for the fourth consecutive month.

The employment index, which had been struggling with sub-50 readings since March, finally crossed the expansion/contraction threshold with an increase of 3.9 percentage points to 51.8 percent (chart, right). The supplier delivery index fell 5.6 percentage points to 54.9 percent, but the drop might be viewed as a favorable development. That is, it perhaps signals smoother operation of supply chains, which is leading to faster deliveries.

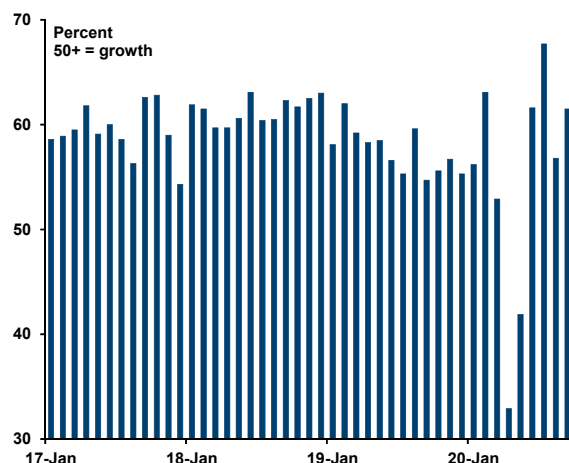
ISM Nonmanufacturing: Monthly Indexes

	May-20	Jun-20	Jul-20	Aug-20	Sep-20
ISM Nonmfg. Composite	45.4	57.1	58.1	56.9	57.8
Business activity	41.0	66.0	67.2	62.4	63.0
New orders	41.9	61.6	67.7	56.8	61.5
Employment	31.8	43.1	42.1	47.9	51.8
Supplier deliveries*	67.0	57.5	55.2	60.5	54.9
Prices	55.6	62.4	57.6	64.2	59.0

* The supplier deliveries index is not seasonally adjusted. The index differs from the other components of the composite measure (business activity, new orders, employment) in interpretation. An index above 50 percent indicates slower deliveries and readings below 50 percent indicate faster deliveries.

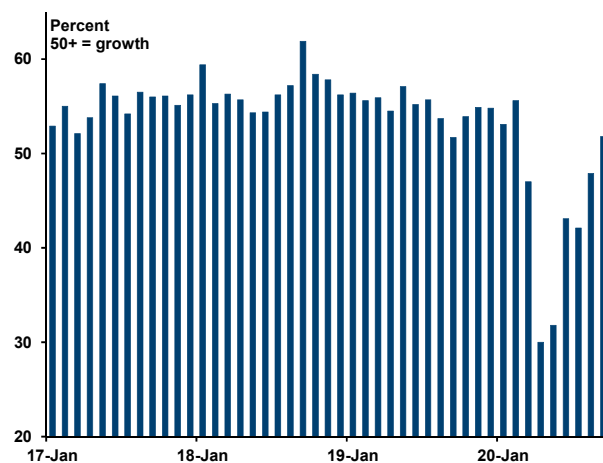
Source: Institute for Supply Management via Haver Analytics

ISM Nonmanufacturing: New Orders Index



Source: Institute for Supply Management via Haver Analytics

ISM Nonmanufacturing: Employment Index



Source: Institute for Supply Management via Haver Analytics

This report is issued by Daiwa Securities Group Inc. through its relevant group companies. Daiwa Securities Group Inc. is the global brand name of Daiwa Securities Co. Ltd., Tokyo ("Daiwa Securities") and its subsidiaries worldwide that are authorized to do business within their respective jurisdictions. These include: Daiwa Capital Markets Hong Kong Ltd. (Hong Kong), regulated by the Hong Kong Securities and Futures Commission, Daiwa Capital Markets Europe Limited (London), regulated by the Financial Conduct Authority and a member of the London Stock Exchange, and Daiwa Capital Markets America Inc. (New York), a U.S. brokerdealer registered with the U.S. Securities and Exchange Commission, a futures commission merchant regulated by the U.S. Commodity Futures Trading Commission, and a primary dealer in U.S. government securities. The data contained in this report were taken from statistical services, reports in our possession, and from other sources believed to be reliable. The opinions and estimates expressed are our own, and we make no representation or guarantee either as to accuracy, completeness or as to the existence of other facts or interpretations that might be significant.